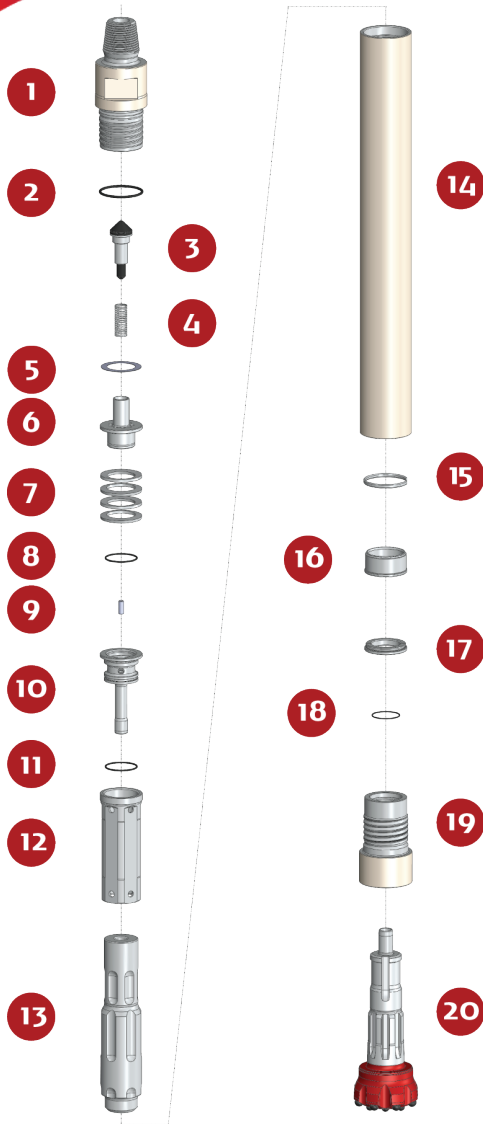


PUMA M5.2 SD5

HAMMER TYPE / S (Standard) CODE / 0006050-000010



SPARE PARTS

ITEM / DESCRIPTION	kg	lb	CODE
1 Backhead 3 1/2" API Reg. Pin ⁽¹⁾	11.7	25.7	0101050-010000
2 O'ring	0	0	C180010-002341
3 Check Valve Dart	0.4	0.9	0101050-030000
4 Spring	0	0.1	0101050-040000
5 Make up Ring Shim ⁽²⁾	0	0.1	0101050-180000
6 Air Distributor	1.2	2.6	0106050-050000
7 Compression Disk (Qty:4)	0.7	1.5	0106050-060000
8 O'ring	0	0	C180010-002231
9 Choke ⁽³⁾	0	0	0101050-070000
10 Air Guide	1.7	3.8	0106050-080001
11 O'ring	0	0	C180010-002237
12 Cylinder	2.7	6	0106050-100000
13 Piston SD-5	14.1	31.1	0106050-120012
14 Wear Sleeve	24.4	53.8	0106050-110000
15 Stop Ring	0.1	0.2	0101050-130000
16 Spacer	0.6	1.3	0101050-190000
17 Bit Retainer	0.4	0.8	0101050-150001
18 O'ring	0	0	C180010-002141
19 Chuck SD-5	5.3	11.6	0101050-170001
20 Bit SD 5	-	-	-

(1) Other thread types can be delivered at request
 (2) Not installed in new hammers
 (3) Different choke sizes are available

GENERAL DESCRIPTION

NET WEIGHT		OUTSIDE DIAMETER		HAMMER LENGTH		HAMMER LENGTH WITH BIT			
kg	lb	mm	in	mm	in	CLOSED BIT		EXTENDED BIT	
63	139	115	4.5	1073	42.2	1178	46.4	1213	47.8

AIR CONSUMPTION												
PRESSURE	psig	150	200	250	300	350	barg	10.3	13.8	17.2	20.7	24.1
VOLUME	SCFM	310	425	542	660	775	m ³ /min	8.8	12.1	15.4	18.8	22

Check 02/2018