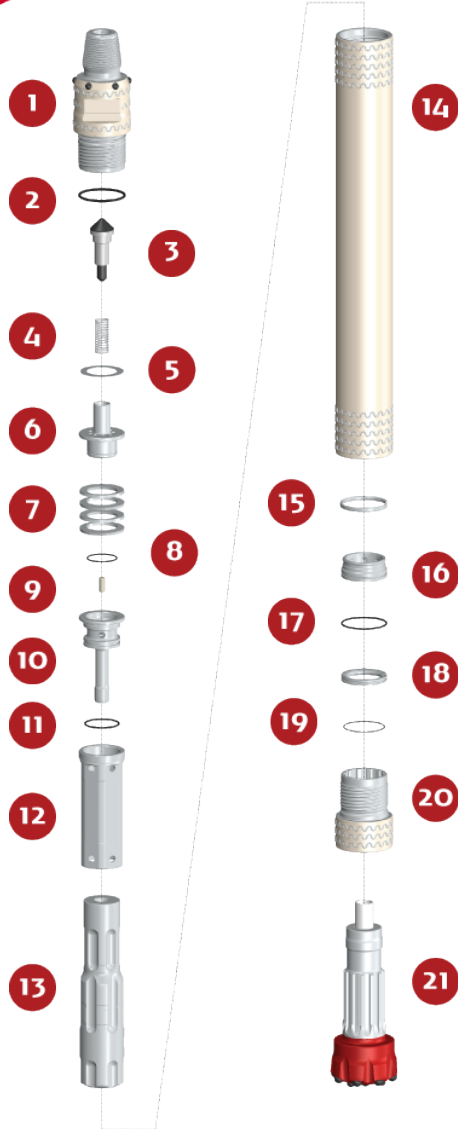


PUMA M5.2EX HV QL 5

HAMMER TYPE / HDWR (Heavy Duty Welding with Retractable Backhead) CODE / 0006050-050033



SPARE PARTS

ITEM / DESCRIPTION	kg /	lb	CODE
1 HDW Retractable Backhead 3 1/2" Reg Pin 3E ⁽¹⁾ ⁽²⁾ ⁽⁵⁾	13	28.7	0106050-010017
2 O'Ring	0	0	C180010-002341
3 Check Valve Dart	0.4	0.9	0101050-030000
4 Spring	0	0.1	0101050-040000
5 Make up Ring Shim ⁽³⁾	0	0.1	0101050-180000
6 Air Distributor	1.2	2.6	0106050-050000
7 Compression Disk (Qty:4)	0.7	1.5	0106050-060000
8 O'Ring	0	0	C180010-002141
9 Choke ⁽⁴⁾	0	0	0101050-070000
10 Air Guide	1.7	3.8	0106050-080001
11 O'Ring	0	0	C180010-002231
12 Cylinder	2.7	6	0106050-100000
13 HV Piston QL5 ⁽⁶⁾	14	30.9	0106050-120013
14 HDW Wear Sleeve 3E ⁽⁵⁾	28	61.7	0106050-110016
15 Piston Retainer Ring	0.2	0.4	0106050-140000
16 Bit Guide	0.5	1.1	0106050-200003
17 O'Ring	0	0	C180010-002238
18 Bit Retainer	0.2	0.5	0106050-150004
19 O'Ring	0	0	C180010-002042
20 HDW Chuck QL5 3E ⁽⁵⁾	4.2	9.3	0106050-170024
21 Bit QL5	-	-	-

(1) Other thread types can be delivered at request
 (2) With retractable inserts (Ø123mm-4.8" between inserts)
 (3) Not installed in new hammers
 (4) Different Choke sizes are available
 (5) 3E: 3 Threads entries
 (6) HV: High Air Consumption

GENERAL DESCRIPTION

NET WEIGHT		OUTSIDE DIAMETER		HAMMER LENGTH		HAMMER LENGTH WITH BIT			
						CLOSED BIT		EXTENDED BIT	
kg	lb	mm	in	mm	in	mm	in	mm	in
67	147	121 ⁽²⁾	4.8 ⁽²⁾	1073	42.2	1178	46.4	1213	47.8

AIR CONSUMPTION												
PRESSURE	psig	150	200	250	300	350	barg	10.3	13.8	17.2	20.7	24.1
VOLUME	SCFM	328	471	614	757	900	m ³ /min	9.3	13.4	17.4	21.5	25.6

Check 12/2017

PHONE: (56-2) 2431-2211; (56-2) 2431-2200 / www.drillco.com

