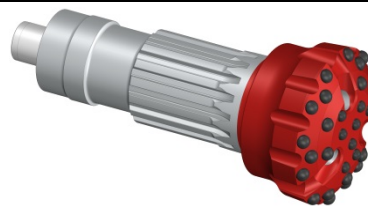


QL-8 shank (P8, PM8.1, PM8.2) hammer



Features: _Length shank = 332mm / _16 Splines / _Height Foot Valve above strike face = 53.5mm

Diameter		Code	Description	No. x Button diameter, mm (inch)				Flushing holes	Weight Approx.	
Inch	mm			Outer gauge	Inner Gauge	Front	Concavity		kg	Lbs
8 1/2"	216.00	0204080000100	Dome Heavy Retractable	12x19 (3/4)	6x19 (3/4)	11x16 (5/8)		3	52,0	114,6
8 1/2"	216.00	0204080000119	Dome Double Gauge Heavy	12x19 (3/4)	12x19 (3/4)	6x19 (3/4)		3	52,0	114,6
8 3/4"	222.00	0204080000113	Dome Double Gauge Heavy	12x19 (3/4)	12x19 (3/4)	8x16 (5/8)		3	53,2	117,3
8 3/4"	222.00	0204080000099	Dome Heavy	12x19 (3/4)	6x19 (3/4)	11x16 (5/8)		3	60,5	133,4
9 1/2"	241.00	0204080000107	Dome Double Gauge Heavy Retractable A1	12x19 (3/4)	15x19 (3/4)	9x16 (5/8)		3	58,1	128,0
9 1/2"	241.00	0204080000104	Dome Double Gauge Heavy Retractable	12x19 (3/4)	9x19 (3/4)	11x16 (5/8)		3	62,8	138,5
9 1/2"	241.00	0204080000062	Flat Face Heavy Retractable	12x19 (3/4)	6x19 (3/4)	12x19 (3/4)		3	62,5	137,8
10"	254.00	0204080000056	Flat Face Retractable	12x19 (3/4)	6x19 (3/4)	13x16 (5/8)		3	65,7	144,8
8 1/2"	216.00	0204080000106	Concave Dome Multiwings	12x19 (3/4)	8x19 (3/4)	6x19 (3/4)	5x19 (3/4)	2	52,0	114,6
8 3/4"	222.00	0204080000114	Dome Double Gauge Heavy	12x19 (3/4)	6x19 (3/4)	3x19 (3/4)	8x19 (3/4)	3	51,7	114,0
9"	228.50	0204080000070	Concave Heavy Retractable	12x19 (3/4)	6x19 (3/4)	3x16 (5/8)	8x16 (5/8)	3	61,4	135,4
FOOT VALVE		0204080010004								

This information can be modified without notice of Drillco S.A. October 2017 (Modif. 0)