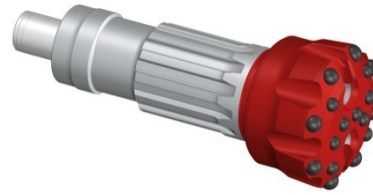


QL-6 shank (PM6.2, PM6.2EX) hammer



Features: _Length shank = 254mm / _12 Splines / _Height of Foot Valve above strike face 59.0mm

Diameter		Code	Description	No. x Button diameter, mm (inch)				Flushing holes	Weight Approx.	
Inch	mm			Outer gauge	Inner Gauge	Front	Concavity		kg	Lbs
6 1/8"	155.50	0204060000068	Dome Ballistic	8x16 (5/8)	4x16 (5/8)	5x16 (5/8)		2	23,0	50,7
6 1/2"	165.00	0204060000077	Dome Heavy	8x19 (3/4)	4x16 (5/8)	5x16 (5/8)		2	24,0	53,0
6 1/2"	165.00	0204060000143	Dome Heavy Retractable	8x19 (3/4)	4x16 (5/8)	5x16 (5/8)		2	24,2	53,5
6 1/2"	165.00	0204060000147	Dome Heavy A1	9x19 (3/4)	6x16 (5/8)	5x16 (5/8)		3	25,0	55,0
6 1/2"	165.00	0204060000166	Dome Heavy A2	9x19 (3/4)	6x19 (3/4)	5x16 (5/8)		3	25,0	55,0
6 3/4"	171.50	0204060000095	Dome Heavy A1	9x19 (3/4)	3x19 (3/4)	6x16 (5/8)		3	25,5	56,0
6 3/4"	171.50	0204060000135	Dome Heavy A1 Retractable	9x19 (3/4)	3x19 (3/4)	6x16 (5/8)		3	26,0	57,3
6 3/4"	171.50	0204060000140	Dome Heavy A2	9x19 (3/4)	6x16 (5/8)	5x16 (5/8)		3	25,6	56,4
6 3/4"	171.50	0204060000184	Dome Heavy A2 Retractable	9x19 (3/4)	6x16 (5/8)	5x16 (5/8)		3	25,6	56,4
6 3/4"	171.50	0204060000136	Dome Heavy A2 Retractable Wear pad	9x19 (3/4)	6x16 (5/8)	5x16 (5/8)		3	25,6	56,4
6 3/4"	171.50	0204060000174	Dome Heavy A3	9x19 (3/4)	6x19 (3/4)	5x19 (3/4)		3	25,6	56,4
6 3/4"	171.50	0204060000086	Dome Heavy B/S**	9x19 (3/4)	3x19 (3/4)	5x19 (3/4)		3	26,0	57,3
6 3/4"	171.50	0204060000192	Dome Heavy A4	9x19 (3/4)	6x19 (3/4)	5x19 (3/4)		3	25,6	56,4
7 1/2"	190.50	0204060000186	Dome Heavy A1 Retr 10W*	10x19 (3/4)	6x19 (3/4)	5x19 (3/4)		2	30,0	66,0
7 1/2"	190.50	0204060000169	Dome Heavy Retr 10W*	10x19 (3/4)	6x19 (3/4)	5x19 (3/4)		2	30,0	66,0
6 1/8"	156.00	0204060000029	Flat Face	8x16 (5/8)		8x16 (5/8)		2	24,0	53,0
6 1/2"	165.00	0204060000167	Flat Face Heavy	8x19 (3/4)		9x16 (5/8)		2	25,0	55,0
6 1/2"	165.00	0204060000176	Flat Face Heavy 10W*	10x19 (3/4)		8x19 (3/4)		2	25,0	55,0
6 1/2"	165.00	0204060000058	Flat Face Welding	8x16 (5/8)		11x16 (5/8)		2	25,0	55,0
6 3/4"	171.50	0204060000165	Flat Face Heavy 10W* B1	10x19 (3/4)		9x19 (3/4)		2	26,0	57,0
6 3/4"	171.50	0204060000156	Flat Face Heavy 10W*	10x19 (3/4)		9x19 (3/4)		2	26,0	57,0
7 1/2"	190.50	0204060000188	Flat Face Heavy 10W*	10x19 (3/4)		11x19 (3/4)		2	30,0	66,0
6 1/2"	165.00	0204060000162	Concave Double Gauge	9x19 (3/4)	3x19 (3/4)	3x19 (3/4)	5x16 (5/8)	3	25,0	55,1
6 1/2"	165.00	0204060000075	Concave Heavy	8x19 (3/4)		4x16 (5/8)	4x16 (5/8)	2	24,6	54,2
6 1/2"	165.00	0204060000146	Concave Heavy "MINING"	10x19 (3/4)		6x16 (5/8)	4x16 (5/8)	2	25,0	55,1
6 1/2"	165.00	0204060000161	Concave Heavy "MINING" B1***	10x19 (3/4)		6x16 (5/8)	4x16 (5/8)	2	25,0	55,1
6 3/4"	171.50	0204060000115	Concave Heavy "MINING"	10x19 (3/4)		6x16 (5/8)	4x16 (5/8)	2	25,8	56,9
6 3/4"	171.50	0204060000159	Concave Heavy "MINING" R	10x19 (3/4)		6x16 (5/8)	4x16 (5/8)	2	26,0	57,3
6 3/4"	171.50	0204060000160	Concave Heavy Retractable 10W*	10x19 (3/4)		4x19 (3/4)	4x19 (3/4)	2	26,0	57,3
7 1/2"	190.50	0204060000138	Concave B/S** Retractable Wear Pad	10x16 (5/8)		4x16 (5/8)	8x16 (5/8)	2	29,2	64,4
7 1/2"	190.50	0204060000139	Concave Welding	10x16 (5/8)		4x16 (5/8)	8x16 (5/8)	2	29,3	64,6
7 7/8"	200.00	0204060000177	Concave Heavy B/S** Retractable	12x19 (3/4)	6x16 (5/8)	3x16 (5/8)	6x16 (5/8)	3	30,9	68,1
7 7/8"	200.00	0204060000108	Concave Heavy Retractable	12x19 (3/4)	6x16 (5/8)	3x16 (5/8)	6x16 (5/8)	3	30,9	68,1
FOOT VALVE		0204060010013								

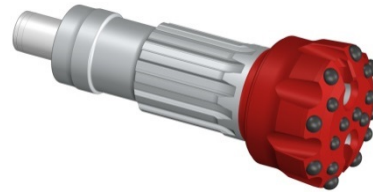
(*) : W = Wings.

(**) : B/S = Ballistic Spherical (Spherical buttons on Outer Gauge and ballistic button on the other positions)

(***) : = Special grade botton

This information can be modified without notice of Drillco S.A. March 2018 (Modif. 1)

QL-6 shank (PM6.2, PM6.2EX) hammer



Features: _Length shank = 254mm / _12 Splines / _Height of Foot Valve above strike face 59.0mm

Diameter		Code	Description	No. x Button diameter, mm (inch)				Flushing holes	Weight Approx.	
Inch	mm			Outer gauge	Inner Gauge	Front	Concavity		kg	Lbs
7 ⁷ / ₈ "	200.00	0204060000121	Concave Retractable	12x16 (5/8)	6x16 (5/8)	3x16 (5/8)	6x16 (5/8)	3	29,9	66,0
8 ¹ / ₂ "	216.00	0204060000175	Concave Heavy	12x19 (3/4)	6x19 (3/4)	3x16 (5/8)	8x16 (5/8)	3	31,6	69,7
FOOT VALVE		0204060010013								

(*) : W = Wings.

(**) : B/S = Ballistic Spherical (Spherical buttons on Outer Gauge and ballistic button on the other positions)

(***) := Special grade botton

This information can be modified without notice of Drillco S.A. March 2018 (Modif. 1)