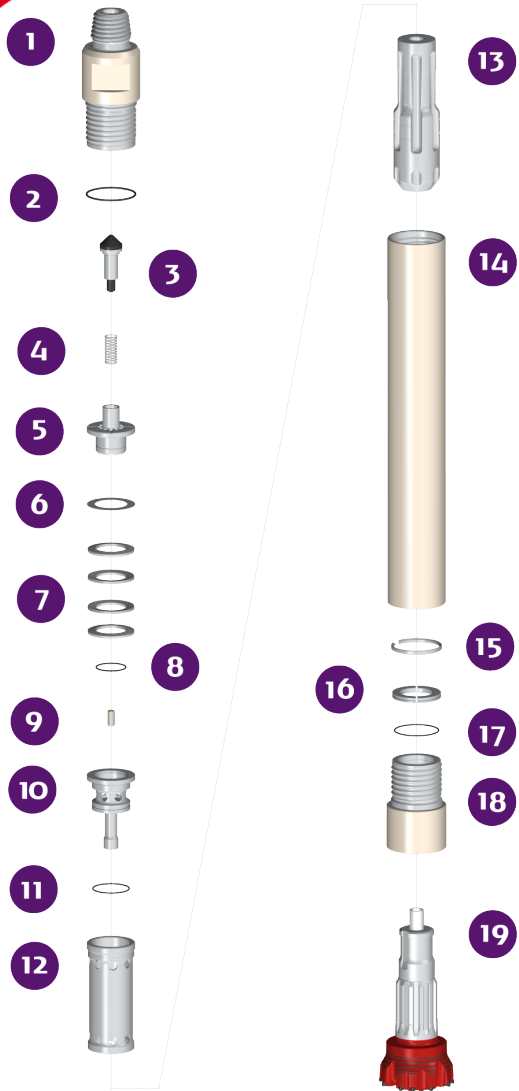


PUMA 7.1 P7.1

HAMMER TYPE / S (Standard) CODE / 0001070-000000



SPARE PARTS

ITEM / DESCRIPTION	kg /	lb	CODE
1 Backhead 4 1/2" Beco Pin ⁽¹⁾	38	83.8	0101070-010002
2 O'Ring	0	0	C180010-002356
3 Check Valve Dart	0.9	2.1	0101080-030000
4 Spring	0	0.1	0101080-040000
5 Air Distributor	3.5	7.6	0101070-050000
6 Make up Ring Shim ⁽²⁾	0.1	0.1	0101070-170000
7 Compression Disk (Qty:4)	0.4	1	0101070-060000
8 O'Ring	0	0	C180010-002236
9 Choke ⁽³⁾	0	0	0101080-070000
10 Air Guide	4.8	10.6	0101070-080000
11 O'Ring	0	0	C180010-002242
12 Cylinder	6.4	14	0101070-100000
13 Piston P7.1	31.4	69.3	0101070-120000
14 Wear Sleeve	57.3	126.3	0101070-110000
15 Piston Retainer Ring	0.2	0.4	0101070-130000
16 Bit Retainer	1	2.2	0101070-140000
17 O'Ring	0	0	C180010-002249
18 Chuck	16.7	36.7	0101070-160007
19 Bit- P7.1	-	-	-

(1) Other thread types can be delivered at request
 (2) Not installed in new hammers
 (3) Different Choke sizes are available

GENERAL DESCRIPTION

NET WEIGHT		OUTSIDE DIAMETER		HAMMER LENGTH		HAMMER LENGTH WITH BIT			
kg	lb	mm	in	mm	in	CLOSED BIT		EXTENDED BIT	
160	353	168	6.6	1370	53.9	mm	in	mm	in
						1500	59.1	1545	60.8

AIR CONSUMPTION												
PRESSURE	psig	150	200	250	300	350	barg	10.3	13.8	17.2	20.7	24.1
VOLUME	SCFM	482	684	886	1088	1290	m ³ /min	13.7	19.4	25.2	30.9	36.6

Check 12/2017

PHONE: (56-2) 2431-2211; (56-2) 2431-2200 / www.drillco.com