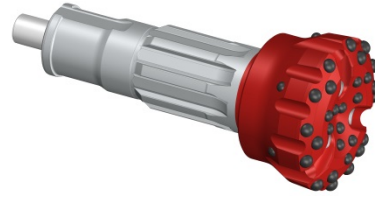


SD-8 shank (P8, PM8.1, PM8.2) hammer



Features: _Length shank = 321mm / _8 Splines / _Height Foot Valve above strike face = 57.0mm

Diameter		Code	Description	No. x Button diameter, mm (inch)				Flushing holes	Weight Approx.	
Inch	mm			Outer gauge	Inner Gauge	Front	Concavity		kg	Lbs
8"	203.00	0204080000117	Dome Double Gauge Heavy Retractable Wear Pad	12x19 (3/4)	9x19 (3/4)	7x16 (5/8)		3	42,7	94,1
8"	203.00	0204080000073	Dome Double Gauge Heavy Retractable	12x19 (3/4)	9x19 (3/4)	7x16 (5/8)		3	42,7	94,1
8"	203.00	0204080000022	Flat Face	12x16 (5/8)		16x16 (5/8)		2	43,0	94,8
8 1/2"	216.00	0204080000035	Flat Face	12x16 (5/8)		18x16 (5/8)		2	48,0	105,8
9 1/2"	241.00	0204080000039	Flat Face	12x16 (5/8)		23x16 (5/8)		3	56,0	123,5
10"	254.00	0204080000018	Flat Face Retractable	12x19 (3/4)	6x19 (3/4)	13x19 (3/4)		3	57,1	125,8
8"	203.00	0204080000053	Concave Retractable	12x16 (5/8)	6x16 (5/8)	3x16 (5/8)	6x16 (5/8)	3	42,0	92,6
8 1/2"	216.00	0204080000065	Concave Heavy Retractable	12x19 (3/4)	6x19 (3/4)	3x16 (5/8)	8x16 (5/8)	3	45,5	100,3
9"	228.50	0204080000020	Concave Heavy Retractable	12x19 (3/4)	6x19 (3/4)	3x16 (5/8)	8x16 (5/8)	3	53,0	116,8
10"	254.00	0204080000025	Concave	12x19 (3/4)	6x19 (3/4)	3x19 (3/4)	9x19 (3/4)	3	55,7	122,8
FOOT VALVE		0204080010001								

This information can be modified without notice of Drillco S.A. October 2017 (Modif. 0)