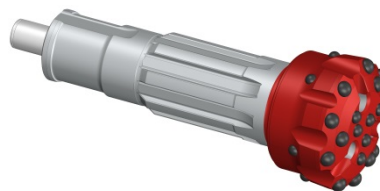


SD-6 shank (PM6.2, PM6.2EX) hammer



Features: _Length shank = 324mm / _8 Splines / _Height of Foot Valve above strike face 54.0mm

Diameter		Code	Description	No. x Button diameter, mm (inch)				Flushing holes	Weight Approx.	
Inch	mm			Outer gauge	Inner Gauge	Front	Concavity		kg	Lbs
6"	152.50	0204060000009	Flat Face	8x16 (5/8)		8x16 (5/8)		2	26,0	57,3
6"	152.50	0204060000117	Flat Face Welding	8x16 (5/8)		8x16 (5/8)		2	26,0	57,3
6 1/8"	155.50	0204060000033	Flat face	10x16 (5/8)		9x16 (5/8)		2	26,7	58,9
6 1/2"	165.00	0204060000036	Flat Face	8x16 (5/8)		11x16 (5/8)		2	28,0	61,7
8"	203.00	0204060000015	Flat Face	12x16 (5/8)		16x16 (5/8)		2	36,0	79,4
6"	152.00	0204060000008	Concave	8x16 (5/8)		4x16 (5/8)	4x16 (5/8)	2	25,7	56,7
6 1/8"	155.50	0204060000040	Concave	10x16 (5/8)		4x16 (5/8)	4x16 (5/8)	2	26,0	57,3
6 1/8"	155.50	0204060000152	Concave P1	8x16 (5/8)		4x16 (5/8)	4x16 (5/8)	2	26,0	57,3
6 3/4"	171.50	0204060000002	Concave	10x16 (5/8)		4x16 (5/8)	4x16 (5/8)	2	28,0	61,7
7 1/2"	190.50	0204060000038	Concave	10x16 (5/8)		4x16 (5/8)	8x16 (5/8)	2	32,0	70,5
8"	203.00	0204060000051	Concave	12x16 (5/8)		8x16 (5/8)	7x16 (5/8)	2	36,0	79,4
FOOT VALVE		0204060010002								

This information can be modified without notice of Drillco S.A. October 2017 (Modif. 0)