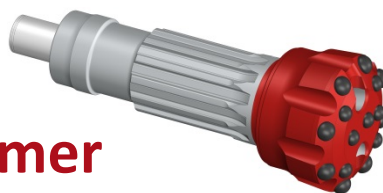


QL-5 shank (PM5.2, PM5.2EX, PM55) hammer



Features: _Length shank = 241mm / _12 Splines / _Height of Foot Valve above strike face = 53.0mm

Diameter		Code	Description	No. x Button diameter, mm (inch)				Flushing holes	Weight Approx.	
Inch	mm			Outer gauge	Inner Gauge	Front	Concavity		kg	Lbs
5 1/2"	140.00	0204050000030	Dome	8x19 (3/4)	4x16 (5/8)	3x16 (5/8)		2	16,4	36,2
5 1/2"	140.00	0204050000042	Dome Heavy Ballistic	8x19 (3/4)	4x16 (5/8)	3x16 (5/8)		2	16,4	36,2
5 1/2"	140.00	0204050000053	Dome Welding	8x16 (5/8)	4x16 (5/8)	3x16 (5/8)		2	16,3	36,0
5 3/4"	146.00	0204050000083	Dome 3 Holes Retractable Wear Pad	9x16 (5/8)	3x16 (5/8)	6x16 (5/8)		3	17,4	38,4
5 3/4"	146.00	0204050000081	Dome 3 Holes Welding	9x16 (5/8)	3x16 (5/8)	6x16 (5/8)		3	17,2	38,0
5 3/4"	146.00	0204050000088	Dome Concave 10W*	10x16 (5/8)	6x16 (5/8)	2x16 (5/8)	2x16 (5/8)	2	17,0	37,2
5 3/4"	146.00	0204050000062	Dome Heavy	8x19 (3/4)	4x16 (5/8)	4x16 (5/8)		2	16,5	36,4
5 3/4"	146.00	0204050000076	Dome Heavy Retractable	8x19 (3/4)	4x16 (5/8)	4x16 (5/8)		2	16,7	36,8
5 3/4"	146.00	0204050000020	Dome Heavy Welding	8x19 (5/8)	4x16 (5/8)	4x16 (5/8)		2	16,2	35,7
6 1/8"	155.50	0204050000073	Dome Heavy	9x19 (3/4)	3x19 (3/4)	6x16 (5/8)		3	18,7	41,2
6 1/8"	155.50	0204050000077	Dome Heavy HQ**	9x19 (3/4)	3x19 (3/4)	6x16 (5/8)		3	18,7	41,2
6 1/8"	155.50	0204050000078	Dome Heavy A1	9x19 (3/4)	3x19 (3/4)	6x16 (5/8)		3	19,1	42,1
5 19/32"	142.00	0204050000048	Flat Face	8x16 (5/8)		8x16 (5/8)		2	16,1	35,5
5 3/4"	146.00	0204050000014	Flat Face "Quarry"	8x16 (5/8)		8x16 (5/8)		2	16,2	35,7
5 3/4"	146.00	0204050000061	Flat Face Heavy	8x19 (3/4)		7x16 (5/8)		2	17,0	37,5
5 5/16"	135.00	0204050000086	Concave 3 Holes B/S***	9x16 (5/8)		6x14 (9/16)	5x14 (9/16)	3	15,6	34,4
5 5/16"	135.00	0204050000087	Concave A1 3 Holes B/S***	9x14 (9/16)		6x14 (9/16)	5x14 (9/16)	3	15,5	34,2
5 1/2"	140.00	0204050000089	Concave	8x16 (5/8)		4x16 (5/8)	3x16 (5/8)	2	16,3	36,0
5 1/2"	140.00	0204050000003	Concave	8x16 (5/8)		4x16 (5/8)	3x16 (5/8)	2	16,3	36,0
5 3/4"	146.00	0204050000012	Concave "Quarry"	8x16 (5/8)		4x16 (5/8)	4x16 (5/8)	2	17,0	37,5
5 3/4"	146.00	0204050000071	Concave Heavy Retractable	8x19 (3/4)		4x16 (5/8)	3x16 (5/8)	2	17,0	37,5
6 1/8"	155.50	0204050000070	Concave Heavy	8x19 (3/4)		4x16 (5/8)	4x16 (5/8)	2	19,0	41,9
FOOT VALVE		0204050010011								

(*) : W = Wings

(**) : HQ = Hard Quartzite

(***) : B/S = Ballistic Spherical (Spherical buttons on Outer Gauge and ballistic button on the other positions)

This information can be modified without notice of Drillco S.A. October 2017 (Modif. 0)