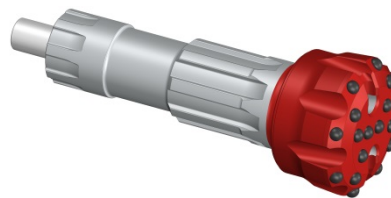


# DHD-360 shank (PM6.2, PM6.2EX) hammer



Features: \_Length shank = 307mm / \_8 Splines / \_Height of Foot Valve above strike face 56.0mm

| Diameter   |        | Code          | Description                    | No. x Button diameter, mm (inch) |             |             |            | Flushing holes | Weight Approx. |      |
|------------|--------|---------------|--------------------------------|----------------------------------|-------------|-------------|------------|----------------|----------------|------|
| Inch       | mm     |               |                                | Outer gauge                      | Inner Gauge | Front       | Concavity  |                | kg             | Lbs  |
| 6 1/2"     | 165.00 | 0204060000088 | Dome                           | 8x16 (5/8)                       | 4x16 (5/8)  | 6x16 (5/8)  |            | 2              | 25,4           | 56,0 |
| 6 3/4"     | 171.50 | 0204060000096 | Dome Double Gauge Welding      | 10x16 (5/8)                      | 8x16 (5/8)  | 7x16 (5/8)  |            | 2              | 26,3           | 58,0 |
| 6 3/4"     | 171.50 | 0204060000137 | Dome Heavy A1 Retractable      | 9x19 (3/4)                       | 3x19 (3/4)  | 6x16 (5/8)  |            | 3              | 26,0           | 57,3 |
| 6"         | 152.50 | 0204060000021 | Flat Face                      | 8x16 (5/8)                       |             | 8x16 (5/8)  |            | 2              | 24,0           | 53,0 |
| 6 1/8"     | 155.50 | 0204060000024 | Flat Face                      | 10x16 (5/8)                      |             | 9x16 (5/8)  |            | 2              | 25,0           | 55,0 |
| 8"         | 203.00 | 0204060000022 | Flat Face                      | 12x16 (5/8)                      |             | 16x16 (5/8) |            | 2              | 34,0           | 75,0 |
| 6"         | 152.50 | 0204060000025 | Concave                        | 8x16 (5/8)                       |             | 4x16 (5/8)  | 4x16 (5/8) | 2              | 23,0           | 51,0 |
| 6 1/8"     | 155.50 | 0204060000011 | Concave                        | 10x16 (5/8)                      |             | 4x16 (5/8)  | 4x16 (5/8) | 2              | 24,0           | 53,0 |
| 6 1/2"     | 165.00 | 0204060000173 | Concave Heavy                  | 8x19 (3/4)                       |             | 4x16 (5/8)  | 4x16 (5/8) | 2              | 25,2           | 55,6 |
| 6 3/4"     | 171.50 | 0204060000158 | Concave Heavy Retractable 10W* | 10x19 (3/4)                      |             | 6x16 (5/8)  | 4x16 (5/8) | 2              | 26,6           | 58,6 |
| 7 1/2"     | 190.50 | 0204060000048 | Concave                        | 10x16 (5/8)                      |             | 4x16 (5/8)  | 8x16 (5/8) | 2              | 30,0           | 66,1 |
| 8"         | 203.00 | 0204060000047 | Concave Welding                | 12x16 (5/8)                      |             | 8x16 (5/8)  | 7x16 (5/8) | 2              | 34,0           | 75,0 |
| 8 1/2"     | 216.00 | 0204060000046 | Concave                        | 12x16 (5/8)                      |             | 10x16 (5/8) | 8x16 (5/8) | 2              | 37,0           | 81,6 |
| 8 5/8"     | 219.00 | 0204060000026 | Concave                        | 12x16 (5/8)                      |             | 10x16 (5/8) | 9x16 (5/8) | 2              | 38,5           | 84,9 |
| 9 1/2"     | 241.00 | 0204060000110 | Concave Dome                   | 12x16 (5/8)                      | 8x16 (5/8)  | 6x16 (5/8)  | 9x16 (5/8) | 2              | 43,5           | 96,0 |
| 10"        | 254.00 | 0204060000105 | Concave                        | 18x19 (3/4)                      |             | 3x19 (3/4)  | 9x19 (3/4) | 3              | 44,0           | 97,0 |
| FOOT VALVE |        | 0204060010003 |                                |                                  |             |             |            |                |                |      |

(\*): W = Wings.

This information can be modified without notice of Drillco S.A. September 2017 (Modif. 0)